

TopCon

Bi-Facial
565Wp-650Wp



Glass
To
Glass



30 Years
Performance
Warranty



12 Years
Manufacturing
Warranty

5 GW

Manufacturing
Facility



Best in class
thermal coefficients



Sustain heavy
snow & wind loads



Highest
commercial
gains



Split junction
box improve
heat dissipation



Increase
shade
tolerance



Highest
reliability

Corporate Head Office
F27, Amravati MIDC Area,
Express Highway NH 06,
Amravati 444607, Maharashtra.

+91-9146019185
+ 0721-2520922
info@eceindia.com

Corporate Sales Office
2nd Floor, Navle Icon,
Ambegaon, Pune-411046

TopCon Series

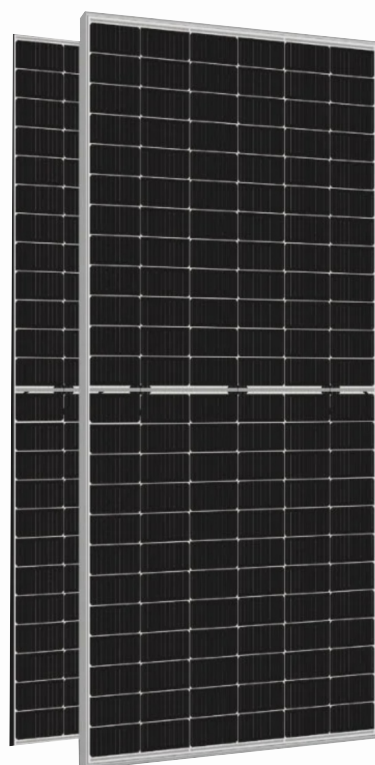
590w Bi-Facial | 144 Cell

N-type Bifacial Module

Technical Specifications

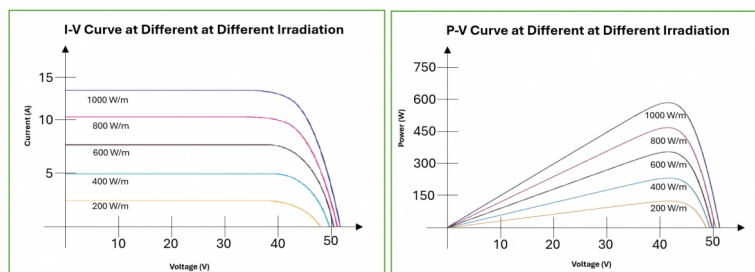
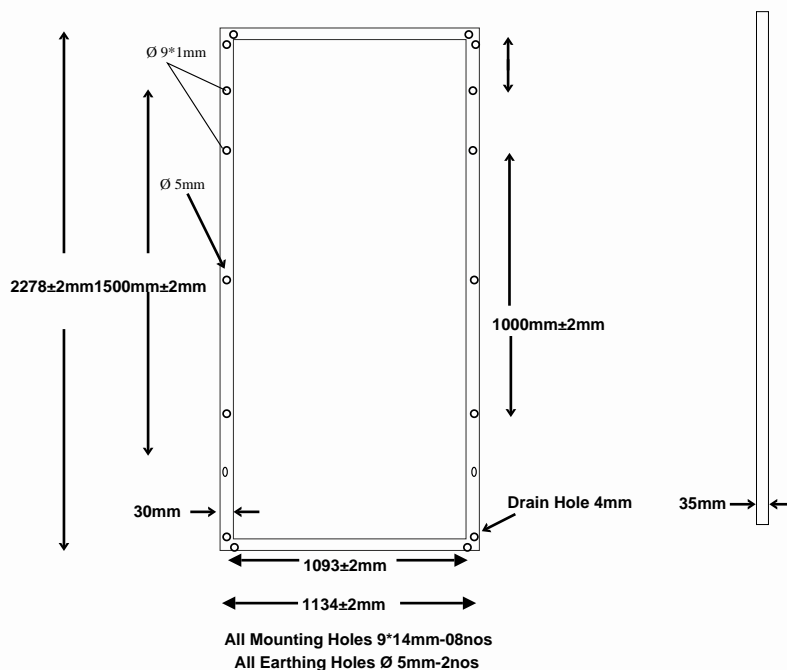
Specifications	ECE144T590
Power (Pm) in Watts (nominal)	590±2%
Open Circuit Voltage (Voc) in Volts	51.84
Short Circuit Current (Isc) in Amps	13.89
Voltage at Max Power (Vmp) in Volts	45.00
Current at Max Power (Imp) in Amps	13.16
Module Fill Factor (%)	82.26
Module Efficiency (%)	22.84%
Maximum System Voltage (Vdc)	1500V
Solar Cells per Module (Units)	72 TopCon - 144 Half Cut Cells
Max Series Fuse Rating in Amps	30
Normal Operating Temperature	42±2°

* All electrical parameters specified at STC: 25°C cell temperature; 1000W/ M² irradiance; AM 1.5



Mechanical Details

Solar Cells Type	Half cut TopCon
Solar Glass	3.2 mm ARC Glass
Length (L)x Width(W) x Height(T)	2278mm x 1134mm x 35mm
Area	2.58 Sqm
Mounting Hole Pitch (Y)	Y1= 1500mm, Y2=1000mm
Mounting Hole Pitch (X)	1093 + 2 mm
Mounting hole size	12mm*8mm(± 2 mm)
Weight	≈ 28.50
Internal Circuit Connection	Copper Ribbon
Frame	Silver (more than 15 micron) Anodized Aluminium
Cells Encapsulant	EVA (Ethylene Vinyl Acetate)- FC/UFC
Junction Box (Model Type & current Rating)	IP68 Split JB
Connectors	MC4 Compatible
Mechanical Load Condition	Sustain heavy Wind & Snow loads (2400Pa & 5400Pa or 550kg/m2 Maximum diameter of 24mm with hail impact of 83
Cable Length	0.4 Meter



Bi-Facial output - (Back side gain @ STC)		590
15%	Nominal Maximum Power (Pmax) Wp	678.50
	Module efficiency %	26.27
20%	Nominal Maximum Power (Pmax) Wp	708.00
	Module efficiency %	27.41
25%	Nominal Maximum Power (Pmax) Wp	737.50
	Module efficiency %	28.55

Linear Performance Warranty

